



Onteora Middle School

What we are all about!





2022-23 Enrollment

7th grade-82
8th grade-92



Enrollment Details

- IEP students - 41
- 504 students - 14
- ELL students - 1
- Number of students participating in sports
 - ❖ Fall – 85
 - ❖ Winter – 43



Honor Roll



- **7th grade**

- 1st MP: 74 out of 82 = 90% of students
- 2nd MP: 57 out of 82 = 70% of students

- **8th grade**

- 1st MP: 69 out of 92 = 75% of students
- 2nd MP: 62 out of 92 = 67% of students



Clubs/Sports and After School Activities

- French Club
- Art Club
- Battle of the Books
- Coding/Robotics
- Student government
- TUFS(Teaming up for Success)
- Yearbook
- NJHS(Honor Society)
- Rocket Club
- Afterschool HW help
- Science Olympiad
- Environmental Club of Onteora (ECO)



- Shakespear Theater
- Drama club
- GSA
- Fall Sports
 - ❖ Cross Country, Field Hockey, Footballc, Soccer, Swimming(girls) Tennis(girls), Volleyball, Golf(boys)
- Winter Sports
 - ❖ Basketball, Indoor Track. Skiing, Swimming(boys), Wrestling
- Spring Sports
 - ❖ Baseball, Golf(girls), Softball, Tennis(boys), Track & Field

Teachers

Dedicated MS

- 2 Social Studies
- 2 Math
- 2 English
- 2 Science
- 1 Phys-Ed
- 4 Sped
- 1 Home & Careers

Shared with HS

- 3 LOTE Teachers(French and Spanish)
- 2 Art Teachers
- 1 Tech Teacher
- 3 Music Teachers
- 1 Science Teacher
- 1 Math Teacher
- 1 Health Teacher
- 1 ELL Teacher
- 2 Reading Teachers



- 4 School Counselors
- 2 Social Workers
- 2 School Psychologists
- 1 Librarian
- TAs and Monitors

Other shared
Staff



6th Grade is Coming!

Getting Ready:

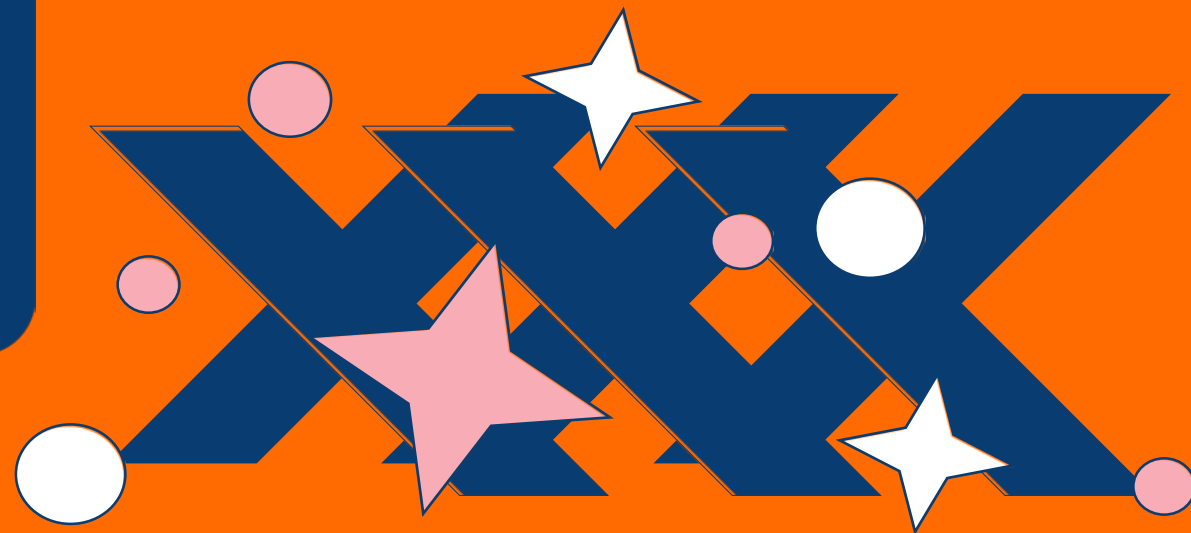
Meeting with Principals

Meeting with 6th Grade Teachers

Meeting with MS Staff

Meeting with B & G

Administrative Meetings



Thank You

James DiDonna
Principal

